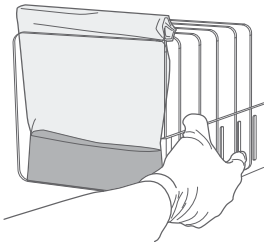
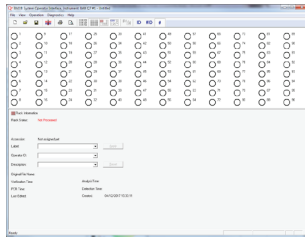


Ready Reference for 24E PCR Assays

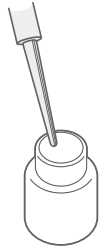
1. Incubate samples in 24 LEB at 37 °C. See User Guide for time.



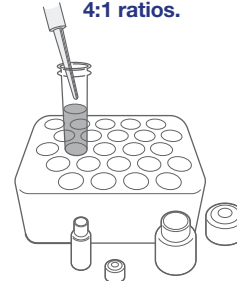
2. Create rack file with data on each sample.



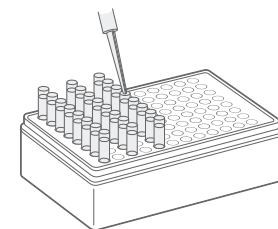
3. Add 1.8 mL sterile distilled water to Lysing agent 1.



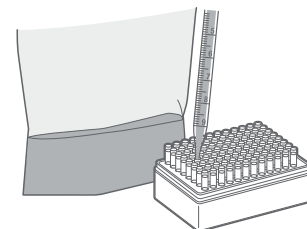
4. Combine diluted Lysing agent 1 with Lysing agent 2 in 4:1 ratios.



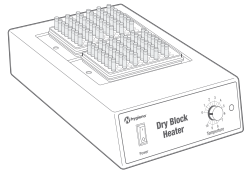
5. Add 50 µL of combined lysing agents to each cluster tube.



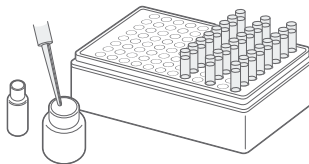
6. Transfer 0.5 mL enriched sample to cluster tube.



7. Heat at 37 °C for 30 minutes.*

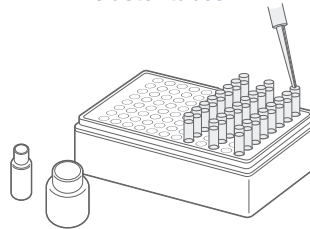


8. Mix 150 µL protease with 12 mL lysis buffer.

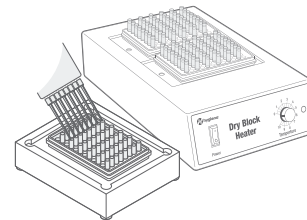


Lysis reagent mixture can be stored at 2 - 8 °C for up to one week.

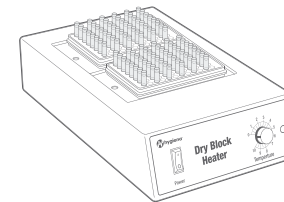
9. Transfer 200 µL of lysis solution from step 8 into cluster tubes.



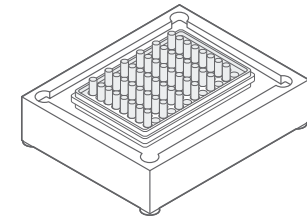
10. Transfer 5 µL of lysate prepared in step 7 to cluster tubes containing pre-dispensed lysis solution in step 9.



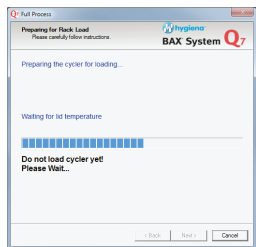
11. Heat at 55 °C for 30 minutes, then at 95 °C for 10 minutes.



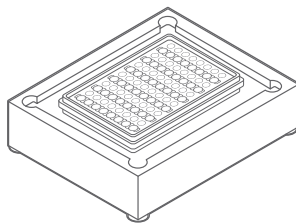
12. Cool for 5 minutes.



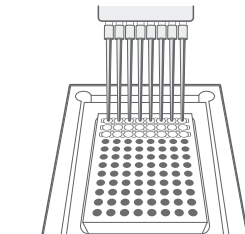
13. Initialize cycler/detector.



14. Arrange PCR tubes in PCR cooling block.

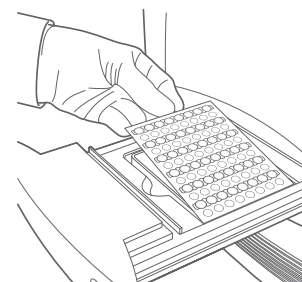


15. Hydrate PCR tables with lysate from step 12.

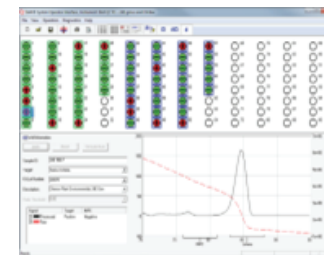


Genus *Listeria* 24E: 50 µL
L. monocytogenes 24E: 30 µL

16. Place PCR tubes in cycler and run program.



17. Review results on screen. See User Guide for details.



Ready Reference for 24E PCR Assays

BAX® System 24E Assays

Use this chart as a quick reference to determine the required volume of Lysing agents 1 and 2 for the number of samples you are testing. Always mix enough lysing agents to perform at least one extra test to allow for pipetting loss.

Samples	Lysing Agent 1 (µL)	Lysing Agent 2 (µL)	Samples	Lysing Agent 1 (µL)	Lysing Agent 2 (µL)	Samples	Lysing Agent 1 (µL)
1	40	10	33	1320	330	65	2600
2	80	20	34	1360	340	66	2640
3	120	30	35	1400	350	67	2680
4	160	40	36	1440	360	68	2720
5	200	50	37	1480	370	69	2760
6	240	60	38	1520	380	70	2800
7	280	70	39	1560	390	71	2840
8	320	80	40	1600	400	72	2880
9	360	90	41	1640	410	73	2920
10	400	100	42	1680	420	74	2960
11	440	110	43	1720	430	75	3000
12	480	120	44	1760	440	76	3040
13	520	130	45	1800	450	77	3080
14	560	140	46	1840	460	78	3120
15	600	150	47	1880	470	79	3160
16	640	160	48	1920	480	80	3200
17	680	170	49	1960	490	81	3240
18	720	180	50	2000	500	82	3280
19	760	190	51	2040	510	83	3320
20	800	200	52	2080	520	84	3360
21	840	210	53	2120	530	85	3400
22	880	220	54	2160	540	86	3440
23	920	230	55	2200	550	87	3480
24	960	240	56	2240	560	88	3520
25	1000	250	57	2280	570	89	3560
26	1040	260	58	2320	580	90	3600
27	1080	270	59	2360	590	91	3640
28	1120	280	60	2400	600	92	3680
29	1160	290	61	2440	610	93	3720
30	1200	300	62	2480	620	94	3760
31	1240	310	63	2520	630	95	3800
32	1280	320	64	2560	640	96	3840

NOTE: After opening and diluting, Lysing agent 1 can be stored at room temperature (20-30°C) for up to 6 months. After combining Lysing agent 1 and Lysing agent 2, use mixture within 4 hours.